



## Measuring Guide

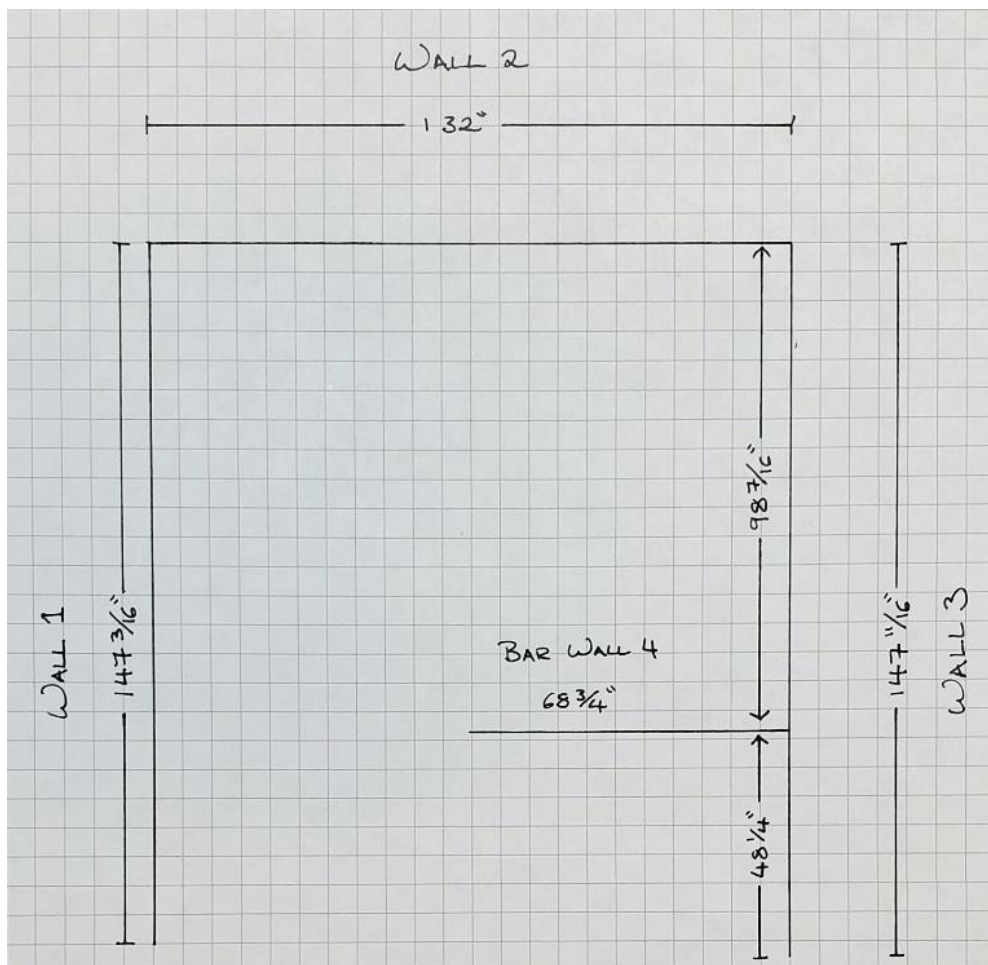
This helpful guide provides easy, step-by-step instructions on how to measure and draw an accurate floor plan of your kitchen or bathroom. Please follow the steps with the aid of the examples and send your completed sketch and measurements back to us at [info@remodelmm.com](mailto:info@remodelmm.com).

### STEP 1: MEASURE THE WALLS

- Starting in the left corner at the front of the room, measure the full length of each wall in inches and record those measurements on the grid paper at the end of this guide.
- Remember to number each wall on the floor plan, like the example.

**\*PRO TIP:** This step **does not** include drawing the openings for windows and doors – those will be addressed in the next step. For now, you should be measuring the length of the entire wall, including any openings.

### EXAMPLE:



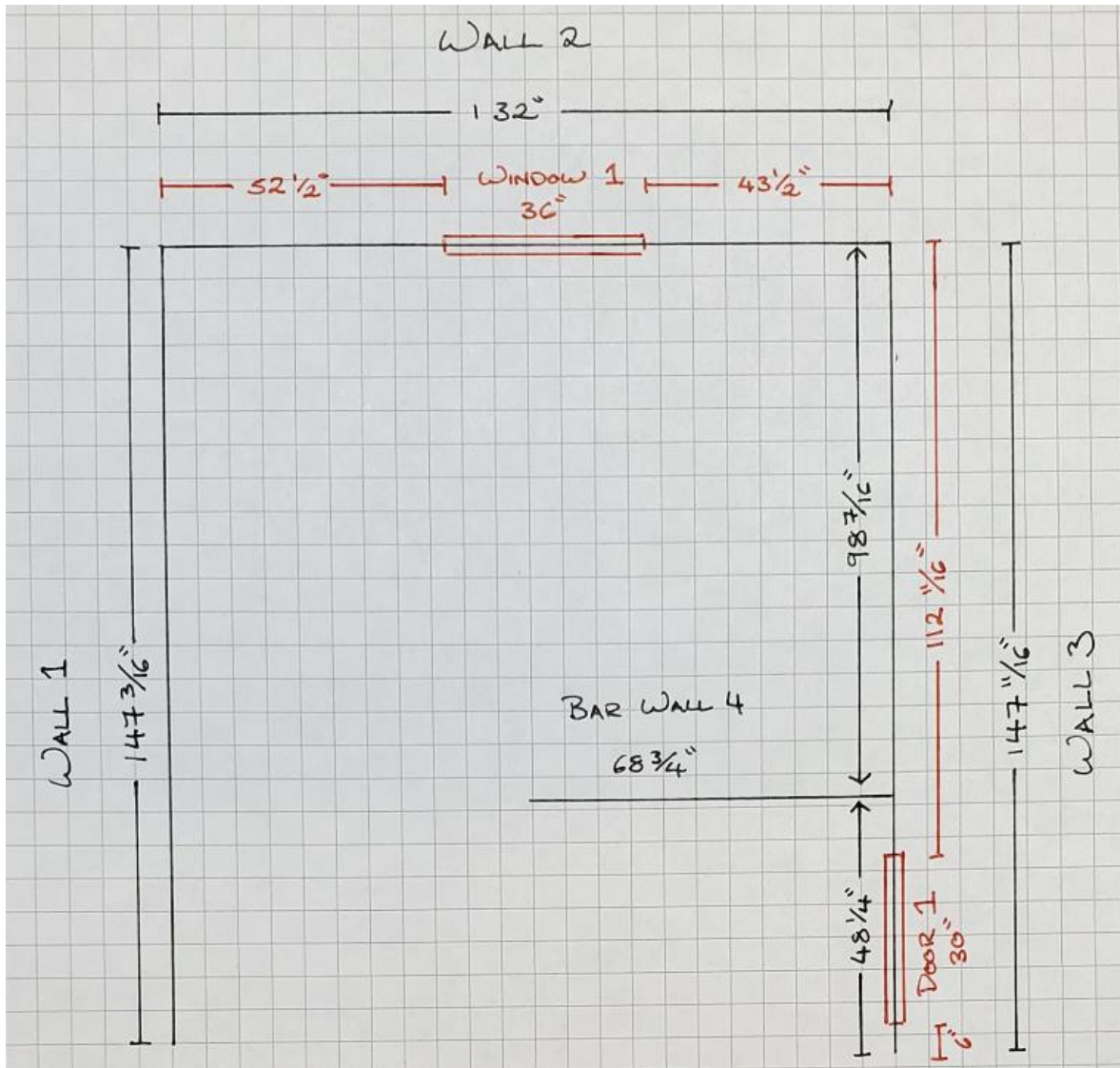


## STEP 2: MEASURE WALL OPENINGS (DOORS & WINDOWS)

- Next, draw in and label the doors and windows, as shown in red in the example.
- Measure each opening, from the INSIDE of the trim (or edge of the drywall if there is no trim.)

**\*PRO TIP:** It helps to draw these items, their labels, and their measurements in a different color than the walls, as shown in the example.

### EXAMPLE:



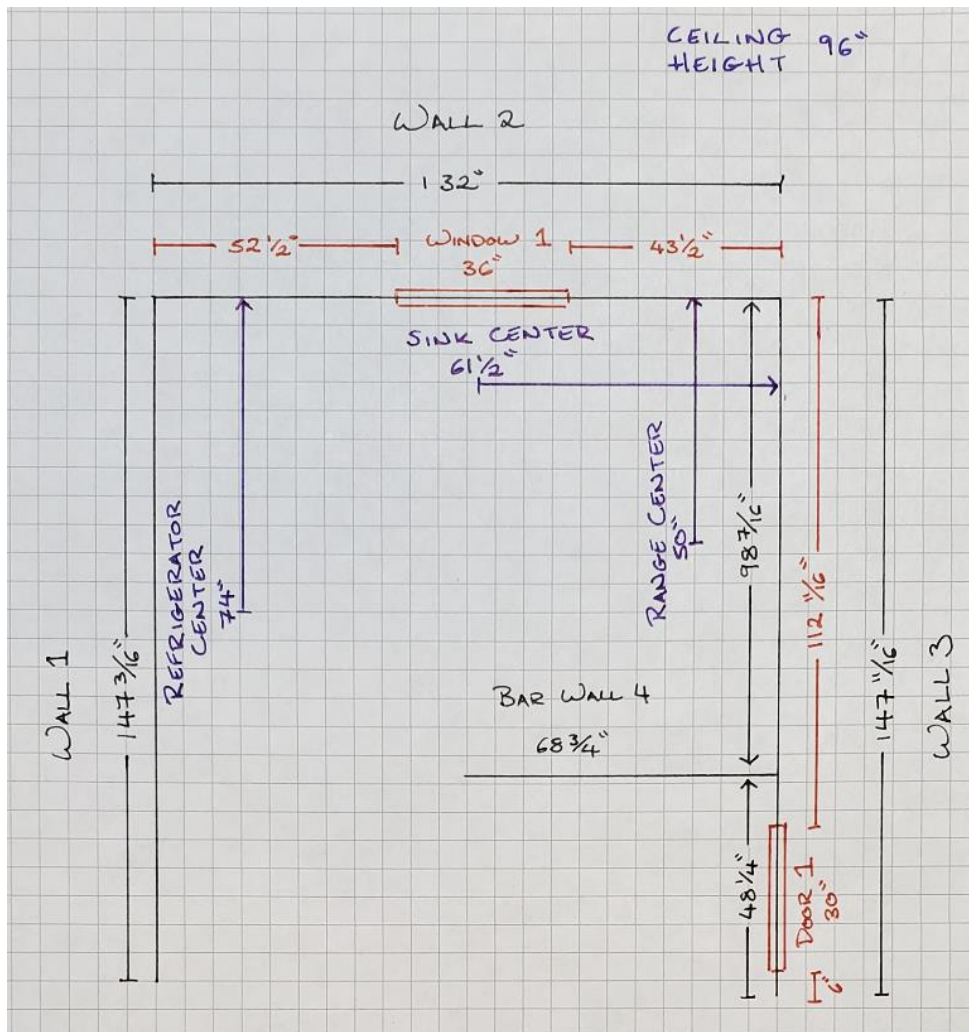


### STEP 3: APPLIANCES

- Draw all appliance centers on your floor plan by writing out the name of each (sink, range, dishwasher, refrigerator, etc.) in it's existing location.
- Starting at the **center** of the appliance, measure toward one of the walls on either side of that appliance. It does not matter which wall is measured to; it is not necessary to measure to the wall on the opposite side of the appliance.

**\*PRO TIP:** It helps to write the name of the appliances and their measurements in a different color, as shown in the example.

### EXAMPLE:





#### **STEP 4: CEILING HEIGHT**

- Measure from the floor to the ceiling at the cabinet wall. You can write this in the top right corner of your grid paper and label it “**Ceiling Height.**”

#### **STEP 5: PHOTOS**

- Take 5-6 photos of your kitchen: a photo from each corner and a few more from the center.

**\*PRO TIP:** Make sure the photos are clear and in good lighting!

Use the following Measuring Grid to draw the floor plan and measurements of your kitchen as outlined in the steps above. Please feel free to call our office at 817-446-0368 or send an email to [info@remodelmm.com](mailto:info@remodelmm.com) if you get stumped or have any questions!

